

# OCTANE

## SEATING

HIGH PERFORMANCE COMFORT



**HOME THEATER SEATING**  
COLLECTION

# HEAT & MASSAGE SERIES

Enjoy the wellness benefits of a massage chair coupled with state-of-the-art home theater seating features. This new technology perfectly combines deep tissue air cell massage with soothing heat therapy. Also included is a power lumbar system, power headrest, and power recline. The true pinnacle in luxury seating has arrived.



**BLISS** LHR Massage Series



**EPIC** LHR Massage Series



**NOVO** LHR Massage Series



**OASIS** LHR Massage Series



**SLATE** LHR Massage Series



**BLISS** LHR Massage Series





# POWER LUMBAR & HEADREST (LHR) SERIES

The LHR Series features three independent motors – a power lumbar system, power headrest, and power recline. This theater seating Series provides pure total body wellness and relaxation by relieving muscle fatigue along your lower lumbar, head and neck areas. These models are the ultimate solution in home theater seating.



**AZURE** LHR Series



**CONTINENTAL** LHR Series



**MAGNUM** LHR Series



**STRATA** LHR Series



**ZONE** LHR Series



**STRATA** LHR Series



Continental LHR Series | Luxe Black Italian Leather

# POWER HEADREST (HR) SERIES

The HR Series features dual independent motors – a power headrest and power recline. This provides relief for any head and neck stress, along with enjoying that perfect viewing angle when reclined to your desired position.



Pillow HR Series | Luxe Black Italian Leather



**CONTOUR** HR Series



**CURVE** HR Series



**DREAM** HR Series



**FLASH** HR Series



**FLEX** HR Series



**GRAND** HR Series



**MEGA** HR Series



**PILLOW** HR Series



**WAVE** HR Series



Curve HR Series | Luxe Black Italian Leather



## XL SERIES

The XL Series consists of full sized home theater seating models designed for maximum comfort. Features include taller seat backs, larger seating surfaces, and wider arms delivering exceptional comfort when lounging for hours on end.





XL200 **STALLION**



XL250 **REGAL**



XL400 **DYNAMO**



XL450 **STEALTH**



XL500 **VIPER**



XL550 **REVOLUTION**



XL600 **ACCELERATOR**



XL650 **BOOST**



XL700 **TURBO**



XL750 **NITRO**



XL800 **EDGE**



XL850 **STORM**



XL900 **BLAZE**



XL450 **STEALTH**

# OCTANE SEATING



# XS SERIES

The XS Series consists of our space-saving theater seating models, specifically designed to maximize the number of seats you can place in a smaller room without having to sacrifice on personal comfort. We've engineered slimmer arms while boasting taller seat backs and overall body comfort.



XS300 **CHARGER**



XS400 **BOLT**



XS700 **CHALLENGER**



XS750 **PILOT**



XS800 **EXCEL**



XS850 **CLOUD**



XS900 **SONIC**



XS950 **DIESEL**



XS950 Diesel Series | Luxe Black Italian Leather

# BIG & TALL (MAX) SERIES

Our Big & Tall Series boasts a 400 pound weight capacity frame, taller backrests, wider armrests, and generous sized seating surfaces. These models are built like a tank, with a reinforced frame that will last for many years to come. Sit back, relax and enjoy.



Vega LHR Max Series | Luxe Black Italian Leather



**VEGA** LHR Max Series



**FORCE** HR Max Series



**NERO** XL Max Series



**VEGA** LHR Max Series



Force HR Max Series | Luxe Black Italian Leather

Azure LHR Series | Built-On Riser | Luxe Black Italian Leather



## BUILT-ON RISER SERIES

The Built-On Riser Series is the perfect solution when you have multiple rows of seats. These models feature a solid built-on riser that adds 8 inches in height, allowing everyone to enjoy the best seat in the house with optimal line of sight.



**TURBO** XL700 | Built-On Riser



**FLEX** HR | Built-On Riser



**AZURE** LHR | Built-On Riser



XL700 Turbo Series | Luxe Black Italian Leather | Back Row with Built-On Riser

# SEAT ACCESSORIES

Our furniture enables you to be connected to the world around you in complete bliss. Relax, lay back, recline, charge your phone, enjoy a light meal, and drink a fine wine – all while lounging in your seat. Our accessories will enhance your seating experience.



**BLACK SWIVEL TABLE**



**GLASS SWIVEL TABLE**



**WALNUT WOOD TABLE**



**ALUMINUM SWIVEL TABLE**



**LED FLEX LIGHT**



**CIGAR & CIGARETTE BASIN**



**REMOVABLE STORAGE ARM**



**REMOVABLE ARM**



**POPCORN & SNACK BOWL**



**WINE GLASS HOLDER**



**PHONE & TABLET HOLDER**



**HEAD & NECK PILLOW**



**LUMBAR PILLOW**



**WIRELESS BATTERY PACK**





# HIGH PERFORMANCE COMFORT



## **MOTORIZED HEADREST**

Headrest can be articulated back and forward using power buttons on inside arm switch.

## **ITALIAN LEATHER UPHOLSTERY**

We source our premium and supple Luxe Series leather from the finest Italian tanneries.

## **ACCESSORY DOCK**

The dock enables you to add over a dozen accessories including swivel tables, phone holder, etc.

## **USB DOCK POWER SWITCH**

Our power switches include a USB port to power up your devices.

## **BLUE LED LIGHTING SYSTEM**

Enjoy a true cinematic experience in the comfort of your home with ambient blue LED lighting.



## **ERGONOMICALLY DESIGNED**

Our models have full lumbar and head support so you can watch movies for hours on end.

## **MOTORIZED LUMBAR SYSTEM**

Automatically achieve optimal lower lumbar support for muscle relief and overall body wellness.

## **STORAGE COMPARTMENTS**

Many models offer deep storage compartments discreetly built into the armrests.

## **GEL INFUSED MEMORY FOAM**

A soothing top layer of cooling gel memory foam to ensure the ultimate in comfort and relaxation.

## **GERMAN MOTORS**

Best in class motors that are quiet, smooth and reliable for the ultimate in power recline.

## **INDIVIDUAL POCKETED COILS**

Placed inside the seat core, our seats will never lose their shape and provide ultimate comfort.

## **1.8 HIGH DENSITY FOAM CORE**

To ensure longevity, our premium foam will provide a lifetime of blissful use.

## **KILN-DRIED HARDWOOD FRAME**

With a combination of metal and kiln-dried wood, our frames will outlast ordinary furniture.

## **NO-SAG SINUOUS SPRINGS**

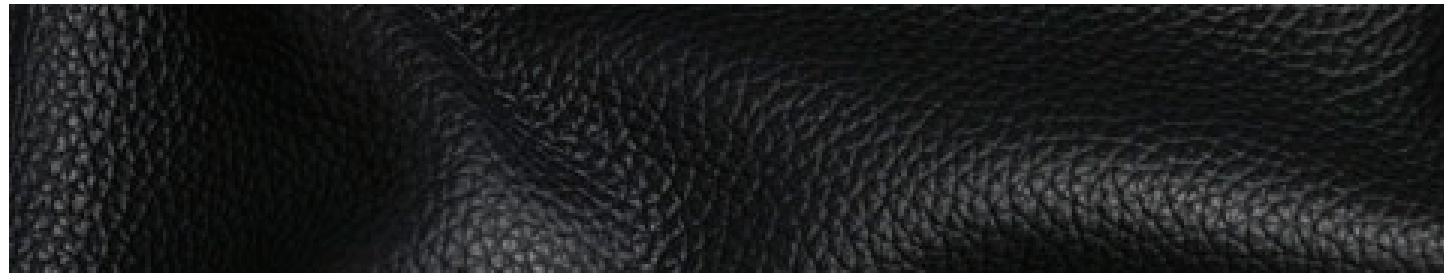
Situated at the seat and back, our zig zag springs provide lasting support and seating comfort.

# MY OCTANE™ PROGRAM

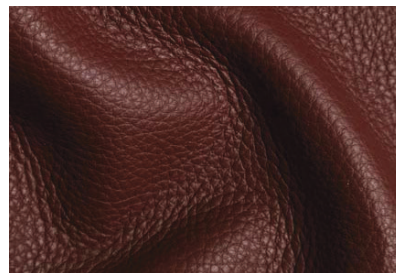
Our furniture is dressed for success. My Octane™ enables you to choose from our large curated selection of hand-picked luxurious leathers and fabrics offered in a beautiful selection of colors.

## ITALIAN TOP GRAIN LEATHER LUXE SERIES

Our leather is sourced exclusively from tanneries in Italy, all hand selected by our artisans. The leather is extremely thick, supple, and luxurious with a natural grain providing a quality appearance and richness.



LUXE BLACK



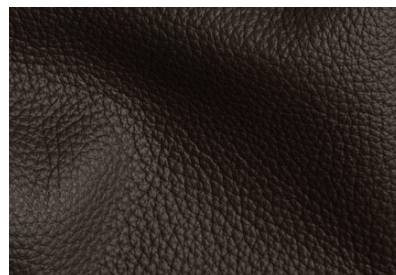
LUXE BERRY



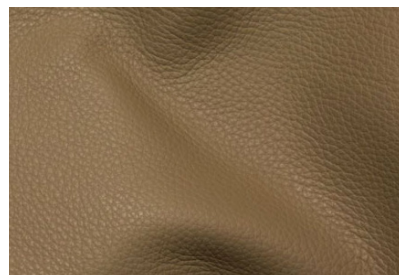
LUXE COBBLESTONE



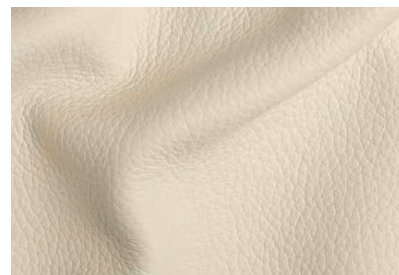
LUXE COGNAC



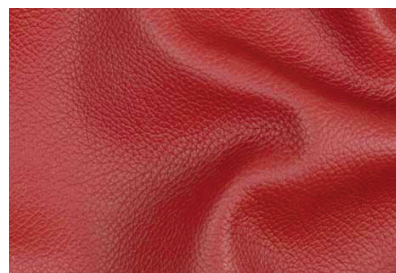
LUXE ESPRESSO



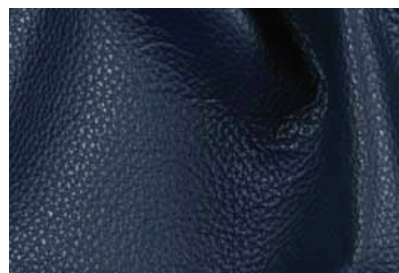
LUXE KHAKI



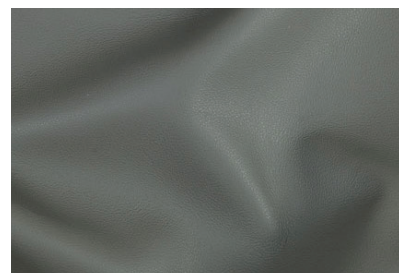
LUXE POLAR



LUXE RED



LUXE REGATTA



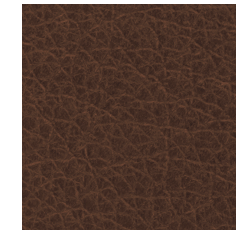
LUXE SMOKE

## BONDED LEATHER ULTRA SERIES

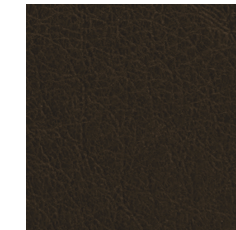
Our bonded leather provides rich tones and textures, a very supple and flexible hand, and an embossed finish with a leather like texture. Enjoy the look and feel of leather at an excellent value price point.



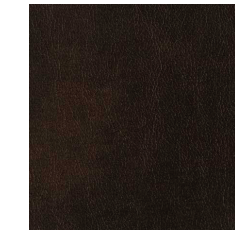
BLACK



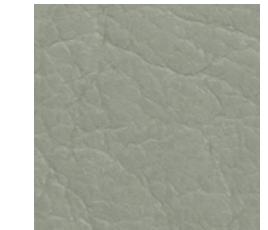
CAMEL



DARK BROWN



MAHOGANY



MIST GREY

## LEATHER GEL CLASSIC SERIES

Leather Gel is a leather-like fabric with a high-end look and feel without the cost. The fabric is designed to be breathable and durable, so you can enjoy your furniture always feeling cool and comfortable.



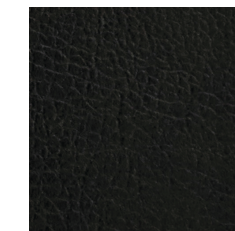
CAPPUCINO



COFFEE



GREY



MIDNIGHT

## MICROFIBER SMARTSUEDE SERIES

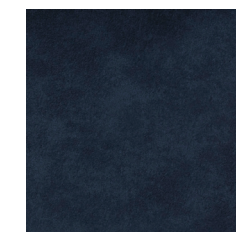
Our microfiber is super soft and plush, consisting of 100% premium polyester. This fabric feels like suede with a velvety texture, along with a vibrant assortment of colors to choose from.



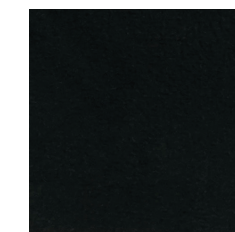
CARBON



JAVA



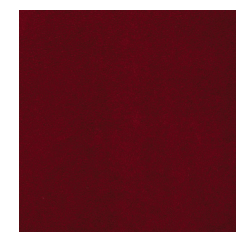
OCEAN



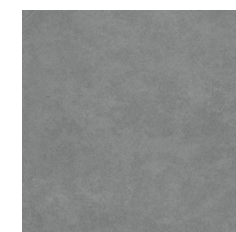
ONYX



SAND



SANGRIA



SHADOW



Dream HR Series | Luxe Cobblestone Italian Leather



## COMPREHENSIVE WARRANTY

---

We take great pride in the way we manufacture our products with our expert craftsmen paying keen attention to every detail, so that our furniture adds comfort to your life. We've backed up the quality of our products with a solid industry-leading warranty to make you even more comfortable with your decision to purchase Octane Seating products.

While the industry standard is one to two years, we provide a full 5-year limited warranty on our frames, springs, and motion recline mechanisms. Our furniture is designed to last.

*For detailed information on our Comprehensive Warranty, visit [www.octaneseating.com](http://www.octaneseating.com) or speak with an Octane Seating Specialist.*

# OCTANE

SEATING

HIGH PERFORMANCE COMFORT



OCTANE SEATING | 9500 W. 49th Avenue, Suite C100, Wheat Ridge, CO 80033

Visit [octaneseating.com](http://octaneseating.com) | 888.627.6743